

**Mechanical, Electrical, and Plumbing Engineering**

**COMPANY PROFILE**

**PRINCIPAL'S NAME & TITLE:** Philip E. Beatty, P.E. - President/Owner

**DATE FIRM STARTED:** July 1999

**INSURANCE COVERAGE:**

General Liability & Worker's Comp  
- \$1,000,000/E&O- \$2,000,000

**CERTIFICATIONS & LICENSES:**

- ESB Oregon State #3803 (tier-2)
- SBA Certification #PO842028
- CAGE #4NVC3
- ORCA Certified
- BSEE, Electrical Engineering
- BSME, Mechanical Engineering
- P.E., Professional Engineers
- LEED Accredited Professionals



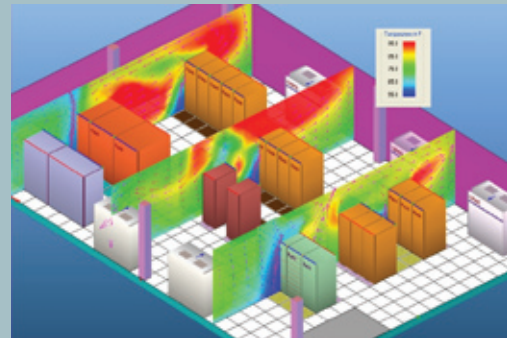
**NAICS CODES**

- #541330 (Primary), Engineering Services
- #541310, Architectural Services
- #541340, Drafting Services
- #541420, Industrial Design Services
- #541490, Other Specialized Design Services
- #541512, Computer Systems Design Services
- #541519, Administrative Management & General Management
- #541618, Other Management Consulting Services
- #541690, Other Scientific & Technical Consulting Services
- #561210, Facilities Support Services
- #561320, Temporary Help Services
- #561990, All Other Support Services

**SIC CODES**

- #7373, Computer Integrated Systems Design
- #8711, Engineering Services
- #8712, Architectural Services
- #8744, Facilities Support Services

**SERVICES**



Computational Fluid Dynamics  
CFD 3-D Modeling

**EMPLOYEES**

- 4 Electrical Engineers, P.E.
- 4 Mechanical Engineer, P.E.
- 3 Mechanical Designers
- 3 Electrical Designers
- 2 Project Managers
- 1 Business Analyst
- 3 Admin

**EQUIPMENT**

- 1 HP T1100 36" Color Plotter
- 2 HP 1055CM 36" Color Plotters
- 2 HP 8150 Laser Printers
- 1 Xerox DocuColor 1632 Printer
- 1 HP Office Jet Pro

**CFD MODELING**

- TileFlow, Computer Room Assessment

**SOFTWARE**

- AutoCAD 2009 MEP, 2010 MEP
- AutoCAD 2005, 2008 BIM
- Microsoft Office 2007
- Visual (Photometrics)
- Adobe Acrobat

**POWER DESIGN**

- PowerFlow Analysis
- ArcFlash

**RESOURCES**

Bradford Consulting Engineers, Inc. is Professionally Registered in:  
**Arizona, California, Colorado, Connecticut, Georgia, Hawaii, Idaho, Maryland, Montana, New York, Oregon, Tennessee, Utah, Virginia, Washington, and Washington D.C.**